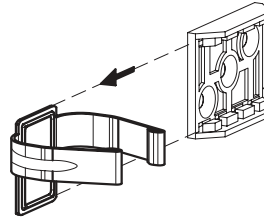
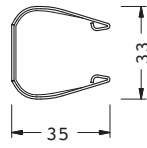


# 228 30 24 00 00

Ø28mm

Fe



228 00 □ AD E2

228 00 □ AM B2

228 00 □ AN C2

228 00 □ VI T2



800



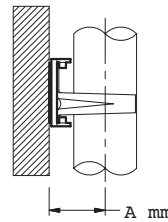
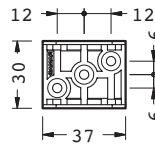
48000



1600

## 228 00 □ AD E2

24  
30  
Amm



PA6



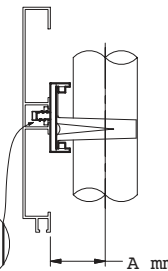
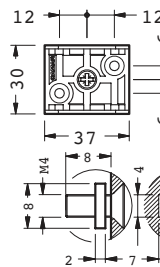
800



1600

## 228 00 □ AM B2

24  
30  
Amm



PA6



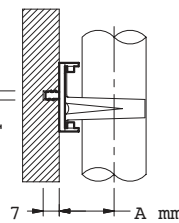
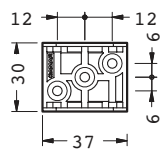
800



1600

## 228 00 □ AN C2

24  
30  
Amm



PA6



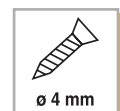
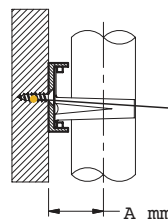
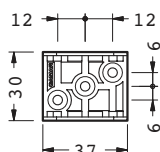
800



1600

## 228 00 □ VI T2

24  
30  
Amm



ø 4 mm

PA6



800



1600