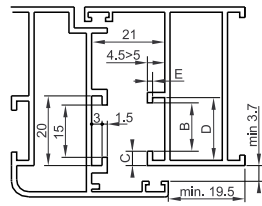
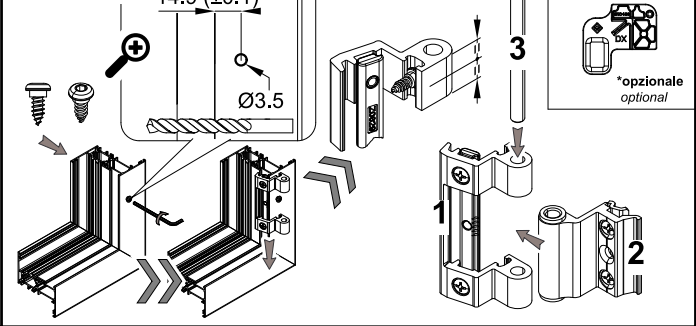


Riferimento nodo Camera Europea
Euro groove section referment



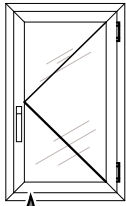
| B | C | D | E |
|------|-----|------|-----|
| 14 | 4 | 18 | 1.5 |
| 13.5 | 3.2 | 16.8 | 2.4 |
| 12 | 2.9 | 15 | 1.5 |
| 10 | 4.2 | 14.5 | 1.5 |

MONTAGGIO
MOUNTING

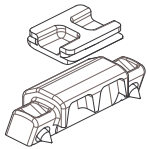


3400.50*
Dima / Template
*opzionale
optional

BATTENTE
CASEMENT

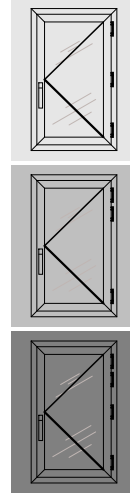


3520.33
Kit sostegno anta
Shutter support kit



| H | L | 600 | 700 | 800 | 900 | 1000 | 1100 | 1200 | 1300 | 1400 |
|------|------|------|------|------|------|------|------|------|------|------|
| 2800 | 100% | 100% | 100% | 100% | 100% | 100% | 100% | 100% | 100% | 100% |
| 2700 | 100% | 100% | 100% | 100% | 100% | 100% | 100% | 100% | 100% | 100% |
| 2600 | 100% | 100% | 100% | 100% | 100% | 100% | 100% | 100% | 100% | 100% |
| 2500 | 100% | 100% | 100% | 100% | 100% | 100% | 100% | 100% | 100% | 100% |
| 2400 | 100% | 100% | 100% | 100% | 100% | 100% | 100% | 100% | 100% | 100% |
| 2300 | 100% | 100% | 100% | 100% | 100% | 100% | 100% | 100% | 100% | 100% |
| 2200 | 100% | 100% | 100% | 100% | 100% | 100% | 100% | 100% | 97% | |
| 2100 | 100% | 100% | 100% | 100% | 100% | 100% | 100% | 100% | 90% | |
| 2000 | 100% | 100% | 100% | 100% | 100% | 100% | 100% | 94% | 83% | |
| 1900 | 100% | 100% | 100% | 100% | 100% | 98% | 86% | 76% | | |
| 1800 | 100% | 100% | 100% | 100% | 100% | 90% | 78% | 69% | | |
| 1700 | 100% | 100% | 100% | 100% | 100% | 95% | 82% | 71% | 61% | |
| 1600 | 100% | 100% | 100% | 100% | 100% | 85% | 73% | 63% | 54% | |
| 1500 | 100% | 100% | 100% | 100% | 90% | 76% | 65% | 55% | N.D. | |
| 1400 | 100% | 100% | 100% | 96% | 80% | 67% | 57% | N.D. | N.D. | |
| 1300 | 100% | 100% | 100% | 84% | 70% | 58% | N.D. | N.D. | N.D. | |
| 1200 | 100% | 100% | 90% | 73% | 60% | N.D. | N.D. | N.D. | N.D. | |
| 1100 | 100% | 97% | 78% | 62% | 50% | N.D. | N.D. | N.D. | N.D. | |
| 1000 | 100% | 83% | 65% | 51% | N.D. | N.D. | N.D. | N.D. | N.D. | |

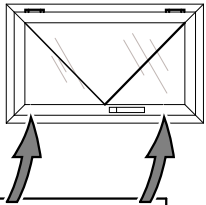
SENZA VITE
without screw
100% = 80kg



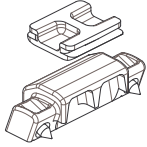
| H | L | 600 | 700 | 800 | 900 | 1000 | 1100 | 1200 | 1300 | 1400 |
|------|------|------|------|------|------|------|------|------|------|------|
| 2800 | 100% | 100% | 100% | 100% | 100% | 100% | 100% | 100% | 100% | 100% |
| 2700 | 100% | 100% | 100% | 100% | 100% | 100% | 100% | 100% | 100% | 100% |
| 2600 | 100% | 100% | 100% | 100% | 100% | 100% | 100% | 100% | 100% | 100% |
| 2500 | 100% | 100% | 100% | 100% | 100% | 100% | 100% | 100% | 100% | 100% |
| 2400 | 100% | 100% | 100% | 100% | 100% | 100% | 100% | 100% | 100% | 100% |
| 2300 | 100% | 100% | 100% | 100% | 100% | 100% | 100% | 100% | 100% | 100% |
| 2200 | 100% | 100% | 100% | 100% | 100% | 100% | 100% | 100% | 100% | 97% |
| 2100 | 100% | 100% | 100% | 100% | 100% | 100% | 100% | 100% | 100% | 90% |
| 2000 | 100% | 100% | 100% | 100% | 100% | 100% | 100% | 100% | 94% | 83% |
| 1900 | 100% | 100% | 100% | 100% | 100% | 98% | 86% | 76% | | |
| 1800 | 100% | 100% | 100% | 100% | 100% | 90% | 78% | 69% | | |
| 1700 | 100% | 100% | 100% | 100% | 100% | 95% | 82% | 71% | 61% | |
| 1600 | 100% | 100% | 100% | 100% | 100% | 85% | 73% | 63% | 54% | |
| 1500 | 100% | 100% | 100% | 100% | 90% | 76% | 65% | 55% | N.D. | |
| 1400 | 100% | 100% | 100% | 96% | 80% | 67% | 57% | N.D. | N.D. | |
| 1300 | 100% | 100% | 100% | 84% | 70% | 58% | N.D. | N.D. | N.D. | |
| 1200 | 100% | 100% | 90% | 73% | 60% | N.D. | N.D. | N.D. | N.D. | |
| 1100 | 100% | 97% | 78% | 62% | 50% | N.D. | N.D. | N.D. | N.D. | |
| 1000 | 100% | 83% | 65% | 51% | N.D. | N.D. | N.D. | N.D. | N.D. | |

CON VITE
with screw
100% = 120kg

SPORGERE
PROJECTING OPENING

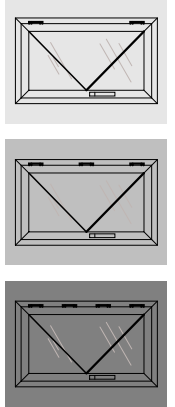


3520.33
Kit sostegno anta
Shutter support kit

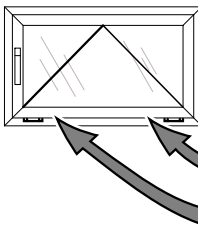


| H | L | 300 | 400 | 500 | 600 | 700 | 800 | 900 | 1000 | 1100 | 1200 | 1300 | 1400 | 1500 | 1600 | 1700 | 1800 | 1900 | 2000 |
|------|------|------|------|------|------|------|------|------|------|------|------|------|------|------|------|------|------|------|------|
| 2000 | 100% | 100% | 100% | 100% | 100% | 100% | 100% | 100% | 100% | 100% | 100% | 100% | 100% | 100% | 100% | 100% | 100% | 100% | 100% |
| 1900 | 100% | 100% | 100% | 100% | 100% | 100% | 100% | 100% | 100% | 100% | 100% | 100% | 100% | 100% | 100% | 100% | 100% | 100% | 100% |
| 1800 | 100% | 100% | 100% | 100% | 100% | 100% | 100% | 100% | 100% | 100% | 100% | 100% | 100% | 100% | 100% | 100% | 100% | 100% | 100% |
| 1700 | 100% | 100% | 100% | 100% | 100% | 100% | 100% | 100% | 100% | 100% | 100% | 100% | 100% | 100% | 100% | 100% | 100% | 100% | 100% |
| 1600 | 100% | 100% | 100% | 100% | 100% | 100% | 100% | 100% | 100% | 100% | 100% | 100% | 100% | 100% | 100% | 100% | 100% | 100% | 100% |
| 1500 | 100% | 100% | 100% | 100% | 100% | 100% | 100% | 100% | 100% | 100% | 100% | 100% | 100% | 100% | 100% | 100% | 100% | 100% | 100% |
| 1400 | 100% | 100% | 100% | 100% | 100% | 100% | 100% | 100% | 100% | 100% | 100% | 100% | 100% | 100% | 100% | 100% | 100% | 100% | 100% |
| 1300 | 100% | 100% | 100% | 100% | 100% | 100% | 100% | 100% | 100% | 100% | 100% | 100% | 100% | 100% | 100% | 100% | 100% | 100% | 100% |
| 1200 | 100% | 100% | 100% | 100% | 100% | 100% | 100% | 100% | 100% | 100% | 100% | 100% | 100% | 100% | 100% | 100% | 100% | 100% | 100% |
| 1100 | 100% | 100% | 100% | 100% | 100% | 100% | 100% | 100% | 100% | 100% | 100% | 100% | 100% | 100% | 100% | 100% | 100% | 100% | 100% |
| 1000 | 100% | 100% | 100% | 100% | 100% | 100% | 100% | 100% | 100% | 100% | 100% | 100% | 100% | 100% | 100% | 100% | 100% | 100% | 100% |
| 900 | 100% | 100% | 100% | 100% | 100% | 100% | 100% | 100% | 100% | 100% | 100% | 100% | 100% | 100% | 100% | 100% | 100% | 100% | 100% |
| 800 | 100% | 100% | 100% | 100% | 100% | 100% | 100% | 100% | 100% | 100% | 100% | 100% | 100% | 100% | 100% | 100% | 100% | 100% | 100% |
| 700 | 100% | 100% | 100% | 100% | 100% | 100% | 100% | 100% | 100% | 100% | 100% | 100% | 100% | 100% | 100% | 100% | 100% | 100% | 100% |
| 600 | 100% | 100% | 100% | 100% | 100% | 100% | 100% | 100% | 100% | 100% | 100% | 100% | 100% | 100% | 100% | 100% | 100% | 100% | 100% |
| 500 | 100% | 100% | 100% | 100% | 100% | 100% | 100% | 100% | 100% | 100% | 100% | 100% | 100% | 100% | 100% | 100% | 100% | 100% | 100% |
| 400 | 100% | 100% | 100% | 100% | 100% | 100% | 100% | 100% | 100% | 100% | 100% | 100% | 100% | 100% | 100% | 100% | 100% | 100% | 100% |
| 300 | 100% | 100% | 100% | 100% | 100% | 100% | 100% | 100% | 100% | 100% | 100% | 100% | 100% | 100% | 100% | 100% | 100% | 100% | 100% |

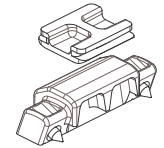
CON VITE
with screw
100% = 120kg



VASISTAS PESANTE
HEAVY BOTTOM HINGE WINDOW

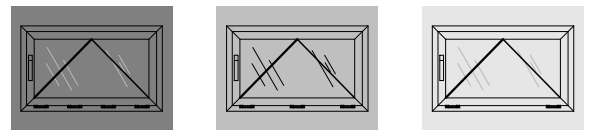


3520.33
Kit sostegno anta
Shutter support kit



CON VITE
with screw 100%=200kg

| H | L | 500 | 1100 | 1600 | 2000 |
|------|-----|------|------|------|------|
| 2000 | 90% | 100% | 100% | 100% | 100% |
| 1600 | 75% | 100% | 100% | 100% | 100% |
| 1100 | 75% | 100% | 100% | 90% | |
| 500 | 60% | 60% | 75% | 100% | |



STRINGA DI PRODOTTO | CALSSIFICATION - EN 1935:2004

| ART. | Categoria d'uso Category of Us | Durabilità Durability | Massa Mass | Resistenza Fuoco Fire Resistance | Sicurezza di utilizzo Safety in Use | Resistenza corrosione Corrosion Resistance | Resistenza effrazione Security | GRADO GRADE |
|---------|-----------------------------------|--------------------------|---------------|-------------------------------------|--|---|-----------------------------------|----------------|
| 3420.71 | 1 | 4 | 3 | 0 | 1 | 4 | 0 | 9 |

