

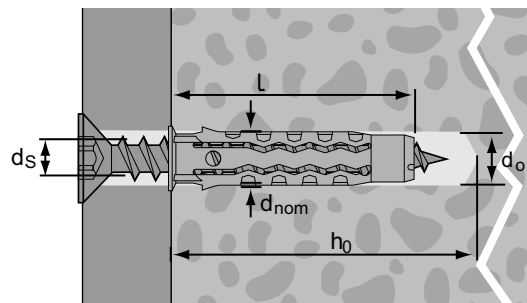


## MQ Quattro® Nylon Plug



2

1



### Name

### Features

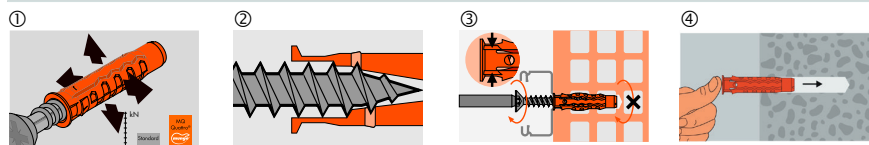
1	Quattro® Nylon Plug	Polyamide PA 6	Face fixing
2	Countersunk screw Pozi	Zinc plated steel DIN 7995	

### Building materials

### Qualities

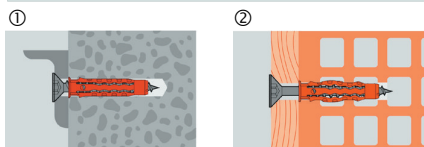


### Characteristics



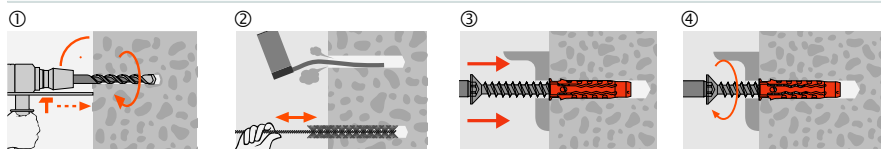
- ① Quattro® Technology - Highest possible retaining values in the lower and middle load area. Particularly suitable for applications with chipboard screws
- ② Knock-in protection prevents premature expansion while installing
- ③ Rotation resistance stops the plug rotating in the drill hole
- ④ Reduced assembling time - Special plug geometry allows ease of entry into the drillhole

### Applications



- ① Angle steel on concrete
  - ② Wood-construction directly on building material
- Thanks to the collar controllable fixing


### Installation



- ① Make the drill hole
- ② Clean the drill hole (not necessary with perforated brick)
- ③ Fix Nylon Plug and building material
- ④ Fasten building materials with a screw



### MQ


Plug size			5	6	8	10	12	14
N <sub>Rec</sub>	- Concrete	kN	0.45	1.10	1.20	1.90	2.70	3.00
	- Brick		0.45	0.90	1.00	1.10	1.50	1.80
	- Perforated brick		0.15 <sup>1)</sup>	0.20 <sup>1)</sup>	0.40 <sup>1)</sup>	0.45 <sup>1)</sup>	0.50	0.60
	- Aerated concrete		0.12	0.12	0.19	0.30	0.40	0.55
	- Sandstone		0.45	0.70	1.00	1.80	2.10	2.30
d <sub>s</sub>	- Wood screw	mm	2.6-4	3.5-5	4.5-6	6-8	8-10	10-12
	- Chipboard screw							
	- Metric screw	M	3	4	5	6	8	10
h <sub>0</sub>	Drill hole depth	mm	35	40	50	70	80	90
d <sub>0</sub>	Drill hole-Ø in the building material	mm	5	6	8	10	12	14
l	Plug length	mm	25	30	40	50	60	70
d <sub>nom</sub>	Outside-Ø plug	mm	5	6	8	10	12	14
			1050050	1050060	1050080	1050100	1050120	1050140
MQ Quattro® Nylon Plug								

### MQ Quattro® Nylon Plug

Wood screws with maximum diameter

1) Chipboard screws with maximum diameter / Safety factor 5

### MQ-S Quattro® Nylon Plug with countersunk screw Pozi

Plug size			5	6	8	10
d <sub>s</sub> x l <sub>s</sub>	- Chipboard screw	mm	3.5x30	4.5x40	5.0x50	6.0x60
h <sub>0</sub>	Drill hole depth	mm	35	40	50	70
d <sub>0</sub>	Drill hole-Ø in the building material	mm	5	6	8	10
l	Plug length	mm	25	30	40	50
d <sub>nom</sub>	Outside-Ø plug	mm	5	6	8	10
PZ	Drive		2	2	2	3
			1380050	1380051	1380052	1380053

### MQ-S Quattro® Nylon Plug

Wood screws with maximum diameter

1) Chipboard screws with maximum diameter / Safety factor 5