



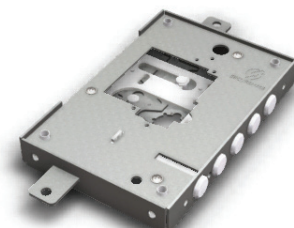
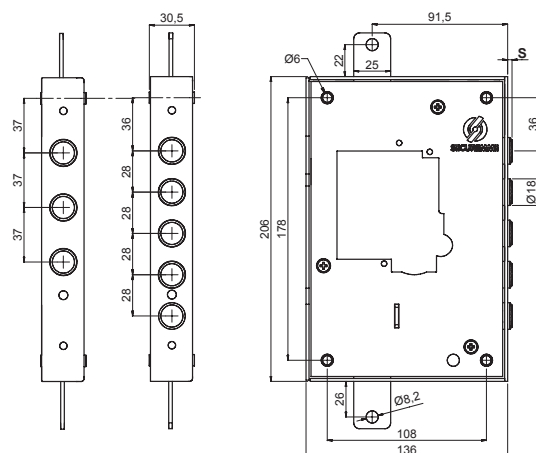
**Serratura senza cuore per serie 25.** Predisposta per cambio cuore sia a doppia mappa che a cilindro. Fissaggio laterale, planare e infilare. Chiusura triplice, senza mezzo giro (scrocco). Entrata chiave 63 mm. Serratura destra, sinistra, 5 catenacci  $\varnothing$  18 mm con interasse 28 mm o 3 catenacci con interasse 37 mm.

**Security lock without heart for line 25.** Arranged for both double ward or cylinder heart. Lateral, planar or mortice fixing. 3 locking points, without half turn (latch). Key entrance 63 mm. Lock right, left, 5 bolts  $\varnothing$  18 mm with interspace 28 mm or 3 bolts with interspace 37 mm.

**FISSAGGIO PLANARE/LATERALE | PLANAR/LATERAL FIXING**

Mano destra (D) Right hand (D)	Mano sinistra (S) Left hand (S)	Sporgenza pistoni (S) Projection bolts (S)	Interasse Interspace	 *	 g
251 1 DCR0328	251 1 SCR0328	3 mm	28 mm	5	1750
251 1 DCR0628	251 1 SCR0628	6 mm	28 mm	5	1800
251 1 DCR1328	251 1 SCR1328	13 mm	28 mm	5	1898
251 1 DCR4328	251 1 SCR4328	43 mm	28 mm	5	2258
251 1 DCR0337	251 1 SCR0337	3 mm	37 mm	5	1650
251 1 DCR0637	251 1 SCR0637	6 mm	37 mm	5	1700
251 1 DCR1337	251 1 SCR1337	13 mm	37 mm	5	1798
251 1 DCR4337	251 1 SCR4337	43 mm	37 mm	5	2158

\* Per ordinare l'articolo in confezione industriale  
To order the lock in industrial packaging  
**251 0 DCR0328**





2511DCR0328

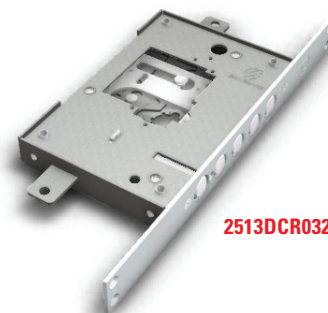
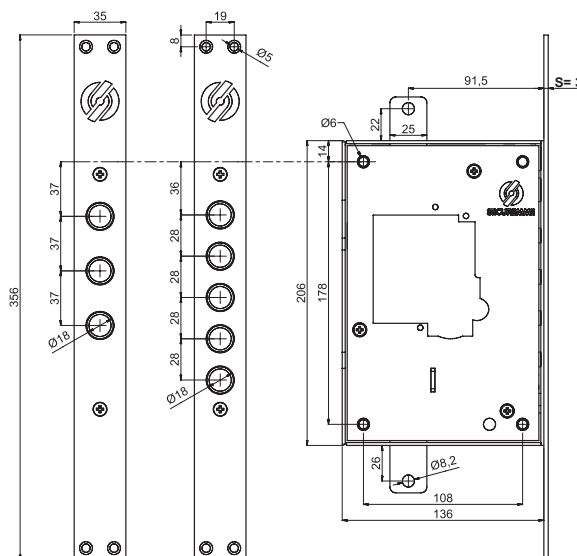


2511DCR0337

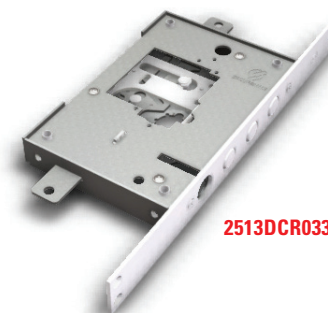
**FISSAGGIO AD INFILARE | MORTICE FIXING**

Mano destra (D) Right hand (D)	Mano sinistra (S) Left hand (S)	Sporgenza pistoni (S) Projection bolts (S)	Interasse Interspace	 *	 g
251 3 DCR0328	251 3 SCR0328	-	28 mm	5	2214
251 3 DCR0337	251 3 SCR0337	-	37 mm	5	2114

\* Confezione singola di serie  
Single packing as standard supply



2513DCR0328



2513DCR0337