



Serratura nuda senza cuore per porte blindate serie 25. Predisposta per cuore sia a doppia mappa che a cilindro. Fissaggio laterale, planare e infilare. Chiusura triplice. Scrocco reversibile Ø 20 mm. azionato da chiave e quadro maniglia 8 mm. 4 catenacci Ø 18 mm con interasse 28 mm, 3 catenacci con interasse 37 mm.

Security lock line 25 without heart. Arranged for both double ward and cylinder heart. Mortice, lateral or planar fixing. 3 locking points. Reversible Ø 20 mm latch operated by key and 8 mm handle square. 4 bolts Ø 18 mm with interspace 28 mm, 3 bolts with interspace 37 mm.

FISSAGGIO PLANARE/LATERALE | PLANAR/LATERAL FIXING

Mano destra (D) o spingere (R) Right hand (D) or push (R) *	Mano sinistra (S) o tirare (L) Left hand (S) or pull (L) *	Sporgenza pistoni (S) Projection bolts (S)	Interasse Interspace	 *	 g
250 1 D CR0328	250 1 S CR0328	3 mm	28 mm	5	1991
250 1 D CR0628	250 1 S CR0628	6 mm	28 mm	5	2014
250 1 D CR1328	250 1 S CR1328	13 mm	28 mm	5	2104
250 1 D CR4328	250 1 S CR4328	43 mm	28 mm	5	2464
250 1 D CR0337	250 1 S CR0337	3 mm	37 mm	5	1939
250 1 D CR0637	250 1 S CR0637	6 mm	37 mm	5	1967
250 1 D CR1337	250 1 S CR1337	13 mm	37 mm	5	2041
250 1 D CR4337	250 1 S CR4337	43 mm	37 mm	5	2302

* Per ordinare l'articolo con mano R/L

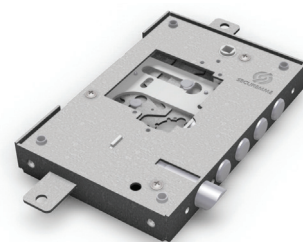
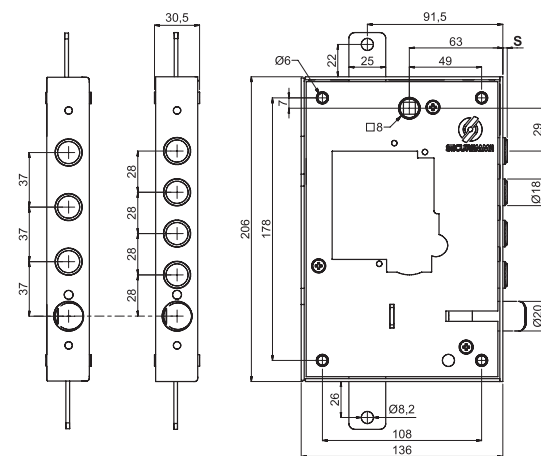
To order the R/L lock

2501 R CR0328

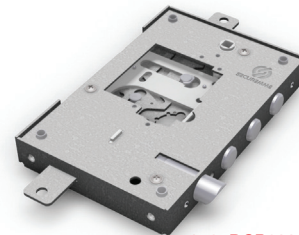
* Per ordinare l'articolo in confezione industriale

To order the lock in industrial packaging

250 0 DCR0328



2501DCR0328



2501DCR0337

FISSAGGIO AD INFILARE | MORTICE FIXING

Mano destra (D) o spingere (R) Right hand (D) or push (R) *	Mano sinistra (S) o tirare (L) Left hand (S) or pull (L) *	Sporgenza pistoni (S) Projection bolts (S)	Interasse Interspace	 *	 g
250 3 D CR0328	250 3 S CR0328	-	28 mm	5	2526
250 3 D CR0337	250 3 S CR0337	-	37 mm	5	2429

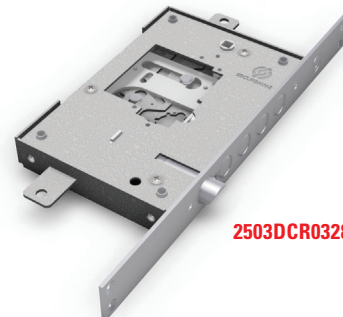
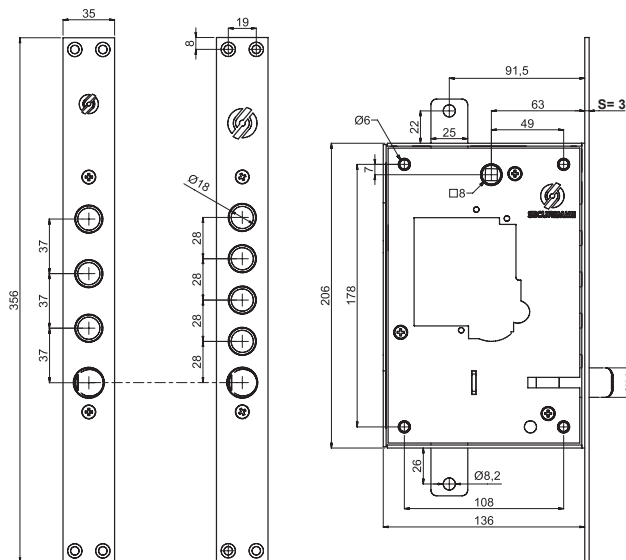
* Per ordinare l'articolo con mano R/L

To order the R/L lock

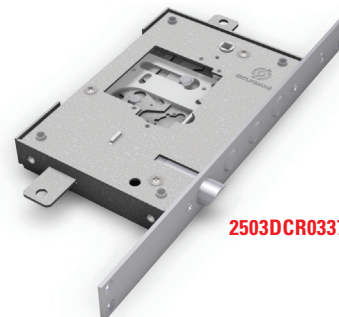
2503 R CR0328

* Confezione singola di serie

Single packing as standard supply



2503DCR0328



2503DCR0337