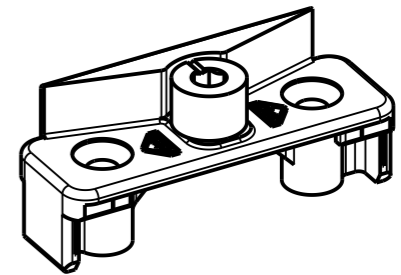
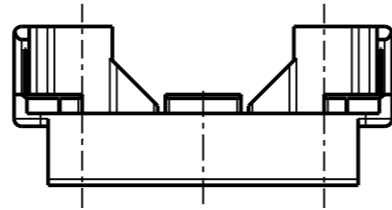
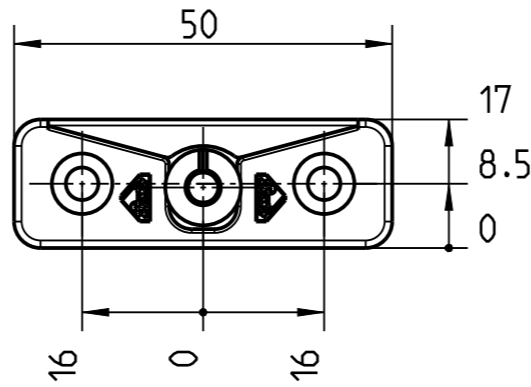
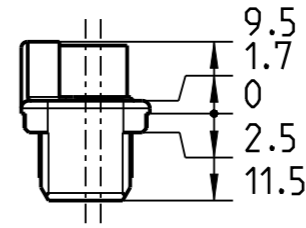
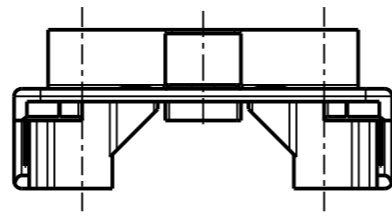
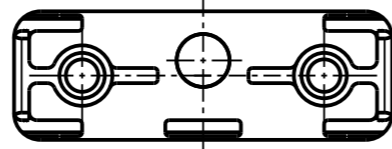
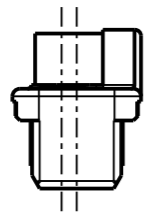


© ISO 16016: WEITERGABE SOWIE VERVIELFÄLTIGUNG DIESER UNTERLAGEN, VERWERTUNG UND MITTEILUNG IHRES INHALTS IST NICHT GESTATTET. SOWEIT NICHT AUSDRUECKLICH ZUGESTANDEN. ZUM IHRERHANDLUNGEN VERPFLICHTEN ZU SCHADENERSATZ. ALLE RECHTE FUER DEN FALL DER PATENTERTHEILUNG ODER GEBRAUCHSMUSTER-EINTRAGUNG VORBEHALTEN. THE REPRODUCTION, DISTRIBUTION AND UTILIZATION OF THIS DOCUMENT AS WELL AS THE COMMUNICATION OF ITS CONTENTS TO OTHERS WITHOUT EXPLICIT AUTHORIZATION IS PROHIBITED. OFFENDERS WILL BE HELD LIABLE FOR THE PAYMENT OF DAMAGES. ALL RIGHTS RESERVED IN THE EVENT OF THE GRANT OF A PATENT, UTILITY MODEL OR DESIGN.



| | | | | |
|-------------------------|--|--------------------------|-------|-------------|
| Gepueft/Check | Date: | 18.07.2022 | Name: | Schelling |
| Maßstab Scale 1:1 | NSP Rahmenteil vstb Euronut : NT (lifting mishandling device, frame component) | | | |
| Roto Frank GmbH | FTT | N732A00030_D | | Index 01 |
| Blatt/Sheet 1/1 | | Model Name N732A00030 | | |